

INDOFINE Chemical Company, Inc.

121 Stryker Lane, Bldg. 30, Suite 1 • Hillsborough, NJ 08844 • U.S.A.

Phone: (908) 359-6778 • FAX: (908) 359-1179

website: www.indofinechemical.com

e-mail: chemical@indofinechemical.com

CERTIFICATE OF ANALYSIS

Catalog Number: D-426

Product Name: **3,7-DIMETHOXYFLAVONE**

Lot Number: 98023

Chemical Formula: C₁₇H₁₄O₄

Molecular Weight: 282.30

Melting Point: 120-121°C

Appearance: Off white powder

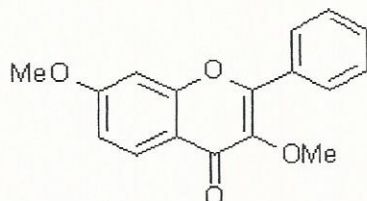
Solubility: Soluble in chloroform

TLC: n-Hexane : Ethyl acetate (7:3)

NMR Spectrum: Enclosed (Conforms to the structure)

Storage: Store in a cool, dry place

Purity (HPLC): 99.82%





INDOFINE Chemical Company, Inc.

121 Stryker Lane, Bldg. 30, Suite 1 • Hillsborough, NJ 08844 • U.S.A.

Phone: (908) 359-6778 • FAX: (908) 359-1179

website: www.indofinechemical.com

e-mail: chemical@indofinechemical.com

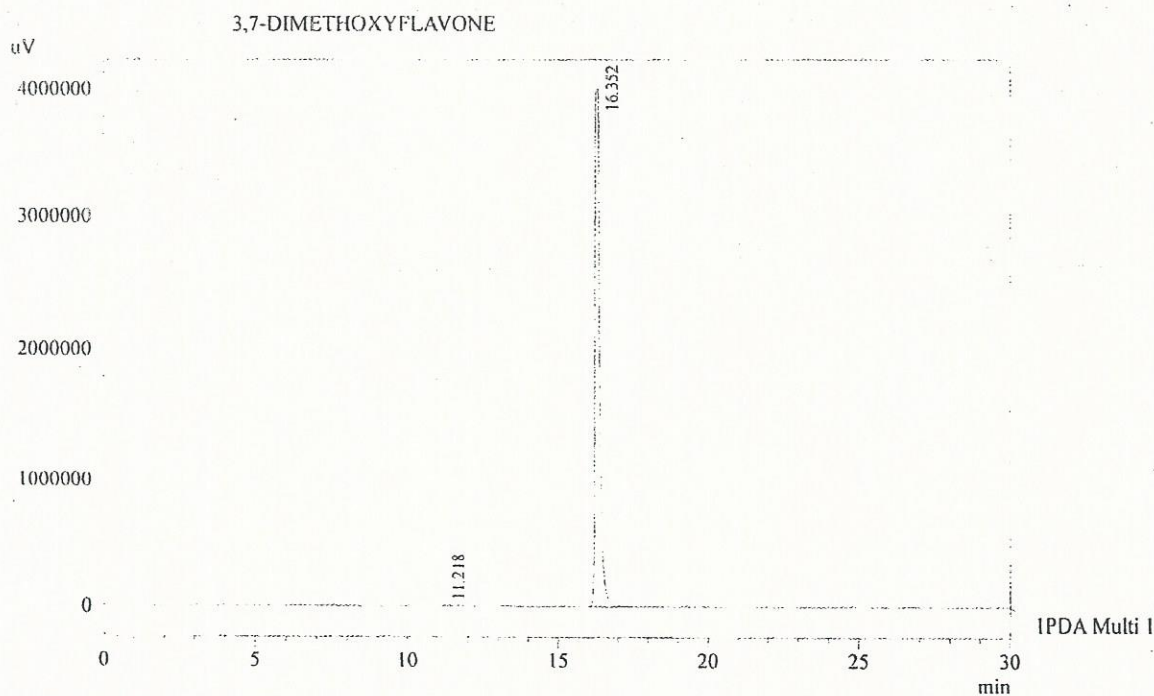
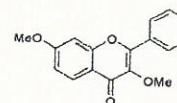
HPLC ANALYSIS

Acquired by : Admin
Sample Name : 3,7-DIMETHOXYFLAVONE
Sample ID : Lot No: 98023
Injection Volume : 1 uL

Catalog No.: D-426
Product Name: 3,7-Dimethoxyflavone
Lot No.: 98023

Method Filename : Linear Gradient.M.lcm
Report Filename : Default.lcr

Column : Gemini C-18(2), (250mm x4.6mm 5.0µ)
Flow : 1.000 mL/min.
Mobile Phase : A(20% of 0.05% TFA in water) B(80% of Acetonitrile)



1 PDA Multi I / 254nm 4nm

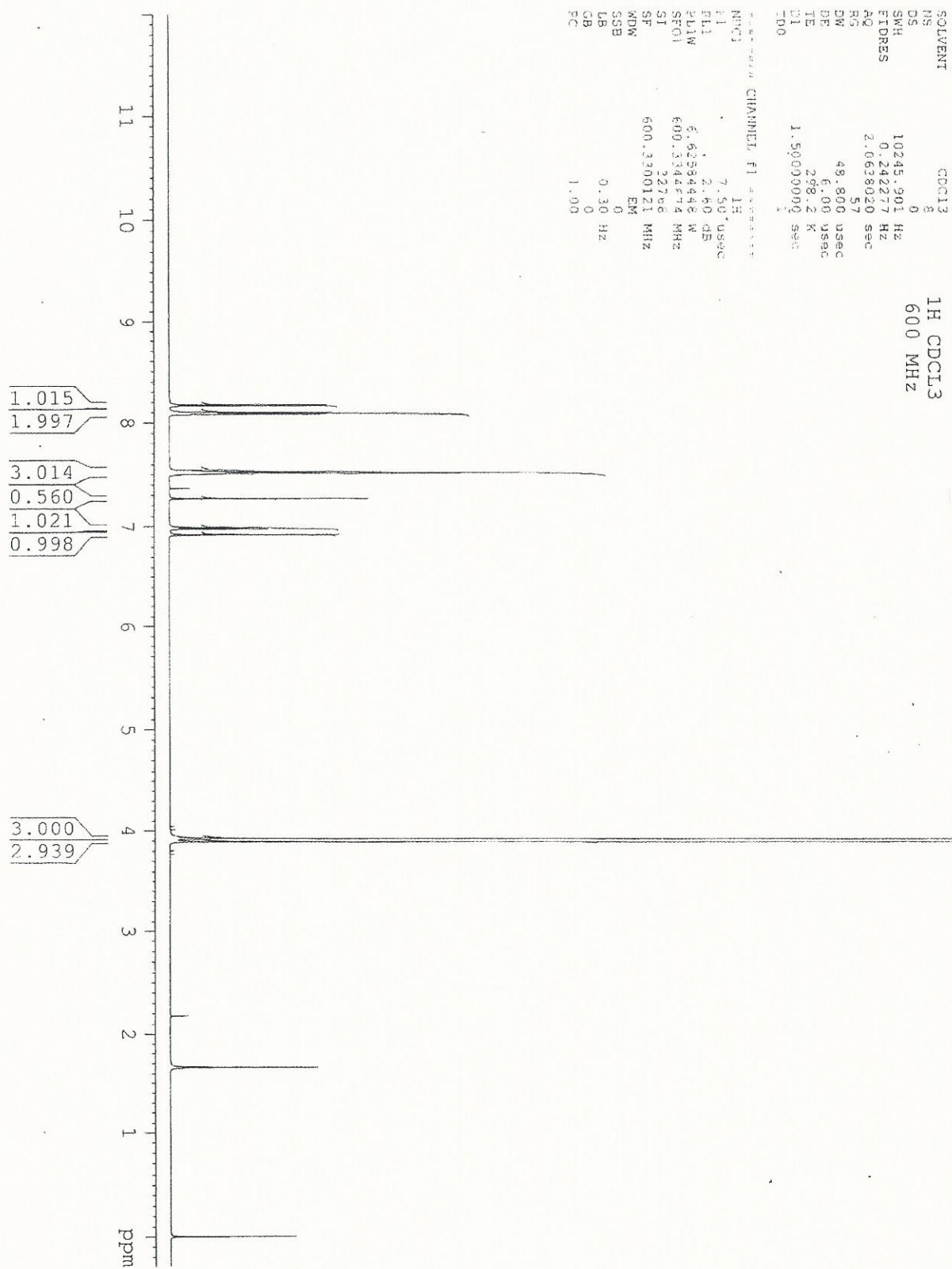
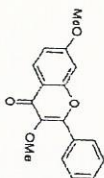
PeakTable

Peak#	Name	Ret. Time	Area	Area %	Relative Retention Time
1	RT:11.218	11.218	81564	0.18	0.00
2	RT:16.352	16.352	45635471	99.82	0.00
Total			45717035	100.00	



INDOFINE Chemical Company, Inc
121 STRYKER LANE
BLDG. 30, SUITE 1
HILLSBOROUGH, NJ 08844

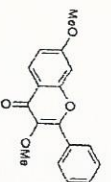
Catalog No.: D-426
Product Name: 3,7-Dimethoxyflavone
Lot No.: 98023





INDOFINE Chemical Company, Inc.
 121 STRYKER LANE
 BLDG. 30, SUITE 1
 HILLSBOROUGH, NJ 08844

Catalog No.: D-426
 Product Name: 3,7-Dimethoxyflavone
 Lot No.: 98023



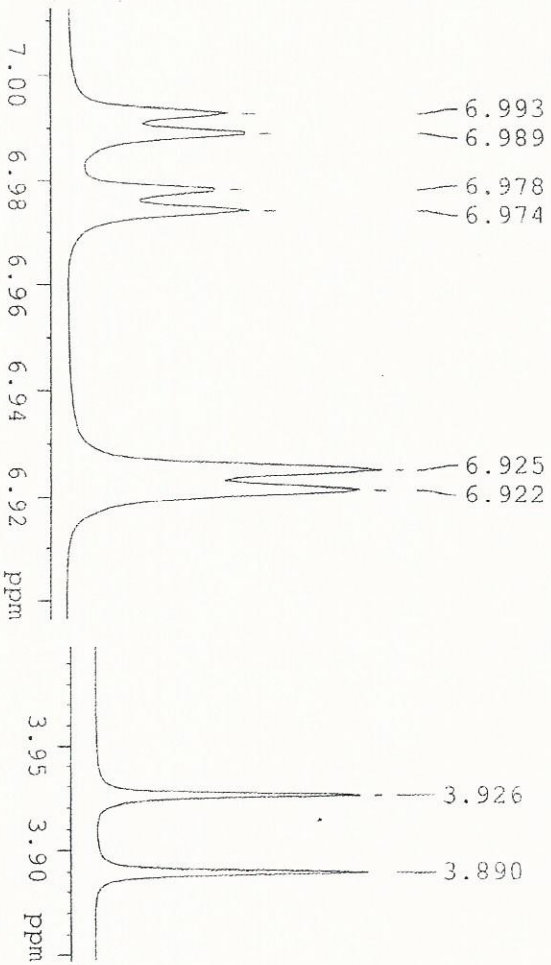
CHANNEL F1

SOLVENT	CDCL3
NS	8
DS	0
SWH	10245.901 Hz
FIDRES	0.242277 Hz
RG	2.0638020 sec
AG	57
DW	48.800 usec
DE	6.00 usec
TE	298.2 K
D1	1.50000000 sec
TD0	1

CHANNEL F1

NUC1	¹ H
FL	7.50 usec
PL1	2.60 dB
PL1W	6.62586448 W
SFO1	400.3344614 MHz
SF	32768
WDW	EM
SSB	0
LB	0.30 Hz
GB	0
PC	1.00

¹H CDCL₃
 600 MHz



8.178
 8.163
 8.100
 8.096
 8.086
 8.084

7.541
 7.536
 7.533
 7.532
 7.527
 7.520
 7.517
 7.514
 7.505

